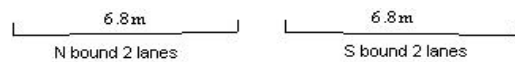
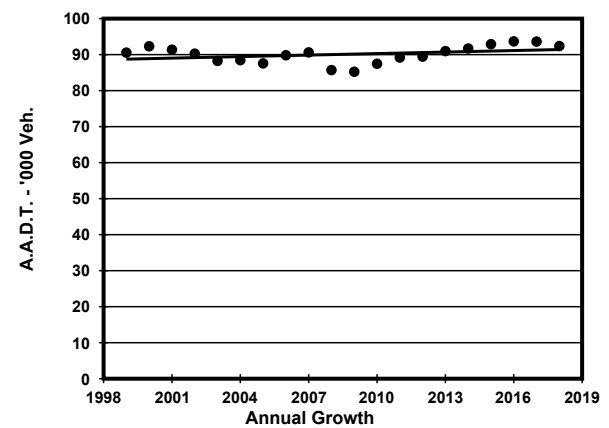
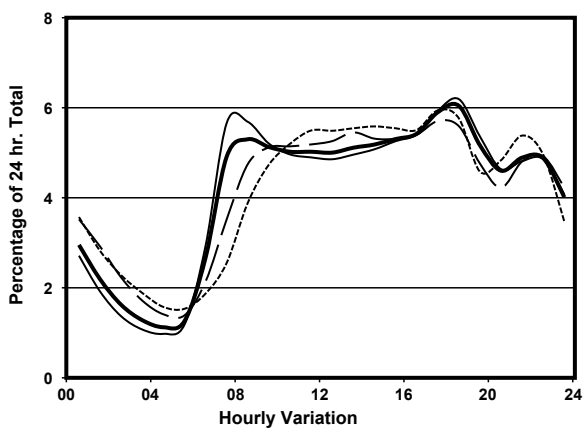
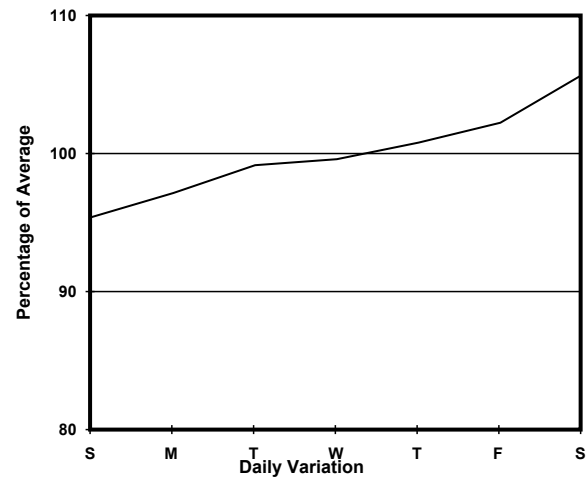
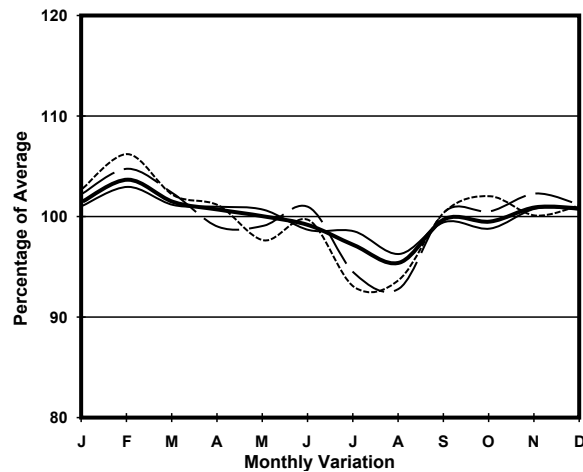


YEAR 2018
CORE STATION 5024
ROAD NETWORK MAJOR
ROAD TYPE URBAN TRUNK ROAD

LINK LION ROCK TUNNEL (from TOLL PLAZA to SOUTH PORTAL)



1. TRAFFIC FLOW VARIATION AND GROWTH



— All day — Mon.- Fri. Sat. - - - - - Sun.

2. TRAFFIC CHARACTERISTICS (BY DIRECTION)

Parameter	All - Day	Mon. - Fri.	Sat.	Sun.
SOUTH BOUND				
A.A.D.T.	45490	45520	47880	43700
R 12 / 24 - %	67.9	68.6	66.4	66.3
R 16 / 24 - %	84.5	84.9	83	83.9
AM Peak Hour	0800-0900	0700-0800	0900-1000	0900-1000
One-way flow at AM peak hour	2730	3000	2830	2490
T - % (AM)	-	9.2	-	-
PM Peak Hour	1800-1900	1800-1900	1700-1800	1700-1800
One-way flow at PM peak hour	2790	2830	2770	2730
T - % (PM)	-	8.2	-	-
Prop.of commercial vehicles - 16 hr.	-	11.3	-	-
NORTH BOUND				
A.A.D.T.	46890	46850	49920	44830
R 12 / 24 - %	58.9	59.8	57.3	56.3
R 16 / 24 - %	81.3	82.6	78	78.2
AM Peak Hour	0800-0900	0800-0900	0900-1000	0900-1000
One-way flow at AM peak hour	2160	2380	2180	1700
T - % (AM)	-	11.3	-	-
PM Peak Hour	1800-1900	1800-1900	1700-1800	1600-1700
One-way flow at PM peak hour	2790	2890	2810	2540
T - % (PM)	-	7.1	-	-
Prop.of commercial vehicles - 16 hr.	-	11.7	-	-

3. OTHER INFORMATION AND COMMENT

4. Vehicle classification and occupancy - Monday to Friday

Time		Class of vehicle									
		Motor Cycle	Private Car	Taxi	Private LB	PLB	Goods veh.		Non Fr. Bus	Fr. Bus	
							Light	M & H		SD	DD
0700-0800	Pro	3.0	57.1	10.7	3.4	0.2	13.7	3.5	4.6	0.1	3.8
	Ocp	1.1	1.4	2.1	8.1	12.0	1.3	1.0	15.0	12.7	48.5
0800-0900	Pro	2.1	63.0	7.0	1.5	0.2	13.2	5.3	3.6	0.1	4.1
	Ocp	1.1	1.3	2.1	6.0	10.3	1.5	1.3	12.1	21.0	45.0
0900-1000	Pro	2.5	47.7	12.4	0.9	0.2	21.1	5.5	4.2	0.1	5.5
	Ocp	1.1	1.3	2.0	2.0	5.7	1.4	1.3	12.1	13.6	25.2
1000-1100	Pro	1.9	42.8	14.9	1.3	0.1	23.4	7.1	4.1	0.1	4.3
	Ocp	1.1	1.3	2.0	2.3	1.0	1.4	1.2	16.2	3.5	26.9
1100-1200	Pro	1.8	46.4	14.9	1.5	0.0	21.2	5.9	4.1	0.1	4.0
	Ocp	1.1	1.3	1.9	4.6	0.0	1.3	1.2	16.8	11.6	33.5
1200-1300	Pro	1.2	47.6	13.2	2.6	0.2	21.8	5.8	4.0	0.1	3.7
	Ocp	1.1	1.4	1.9	7.3	6.5	1.4	1.1	12.3	9.8	33.3
1300-1400	Pro	1.0	51.3	12.0	2.0	0.0	18.7	8.1	3.1	0.1	3.7
	Ocp	1.2	1.4	2.1	4.9	0.0	1.4	1.3	12.8	13.0	39.4
1400-1500	Pro	1.0	48.9	10.8	1.7	0.0	23.3	6.4	3.9	0.1	3.8
	Ocp	1.1	1.4	2.0	2.1	0.0	1.4	1.1	8.1	6.3	36.1
1500-1600	Pro	1.5	51.7	11.2	3.5	0.0	20.1	5.1	3.2	0.1	3.7
	Ocp	1.1	1.4	1.9	5.4	0.0	1.5	1.1	9.3	13.6	35.7
1600-1700	Pro	1.1	55.0	10.8	2.8	0.0	18.3	4.1	3.7	0.1	4.2
	Ocp	1.2	1.4	1.7	2.5	0.0	1.3	1.2	7.3	8.0	37.4
1700-1800	Pro	3.4	55.8	10.1	1.3	0.2	18.3	3.8	2.6	0.1	4.5
	Ocp	1.0	1.3	2.0	2.9	9.0	1.4	1.1	8.9	12.5	47.6
1800-1900 Peak hour	Pro	2.4	68.8	10.9	0.5	0.3	9.3	2.1	2.1	0.1	3.4
	Ocp	1.2	1.4	2.0	2.0	11.3	1.3	1.2	14.9	31.0	67.5
1900-2000	Pro	1.8	67.2	14.3	0.2	0.2	9.7	1.1	1.2	0.1	4.1
	Ocp	1.0	1.3	1.9	1.5	4.0	1.2	1.1	3.6	26.0	55.0
2000-2100	Pro	1.8	60.3	19.3	0.3	0.8	9.7	1.5	2.0	0.1	4.3
	Ocp	1.2	1.3	1.8	1.3	7.9	1.3	1.1	4.2	16.8	35.3
2100-2200	Pro	1.7	60.8	21.1	0.2	0.9	7.6	2.0	1.2	0.1	4.4
	Ocp	1.5	1.3	1.9	1.5	5.1	1.2	1.0	1.0	16.8	38.5
2200-2300	Pro	2.4	59.1	25.0	0.0	1.3	6.0	1.2	0.9	0.1	4.1
	Ocp	1.2	1.4	1.8	0.0	5.4	1.3	1.0	4.8	15.3	42.8
16 hours	Pro	1.9	55.5	13.4	1.5	0.3	15.9	4.3	3.0	0.1	4.1
	Ocp	1.1	1.4	1.9	4.8	6.8	1.4	1.2	11.4	15.0	40.3

Legend

Pro. Proportion of vehicles in % (Sum may not add up to 100% due to figure rounding)*

Ocp. Average occupancy of vehicles including both driver and passengers*

M&H Medium and Heavy

***** All traffic data are collected from combined bounds except for one way traffic